

Research Triangle Park

North Carolina

4000 SANCAR WAY

AT **HUB** 

Discover your **best life.**



We're creating a new way of living

With a hub of activities to choose from, you design life in Research Triangle Park. This iconic community isn't just a place to work anymore, it's a destination to live among gamechangers, explore nature's best, and try new experiences. **Welcome to life at HUB RTP, the park's vibrant downtown.**

Find greenspace to think

Continuous trails and lush nature to promote wellness, inspiration and workplace productivity all can be found at Hub RTP.

OFFICE

+/- 1M SF

MULTI-FAMILY

406 UNITS

RETAIL

+/- 50K SF

LIFE SCIENCE

265K SF

HOTEL

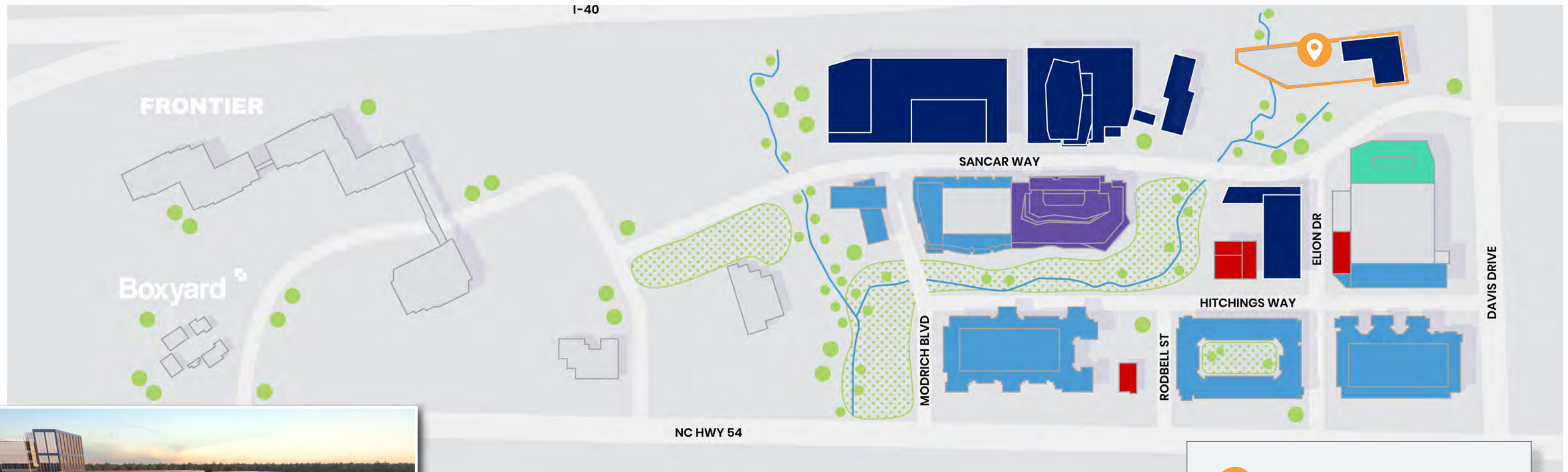
252 ROOMS

GREENSPACE

16 ACRES

Your Built-In Community

1 million s.f. of Class A workspace, nestled in **16+ acres** of conserved greenspace with streamside paths, experiential dining, and modern apartment living all just steps away.



DEVELOPERS:



ALAMO MANHATTAN
NEXPOINT

Hotel



Office



Life Science



Office Retail



Multi-Family



4000 Sancar Way



Workspace



Hotel



Restaurant & Retail



Life Science



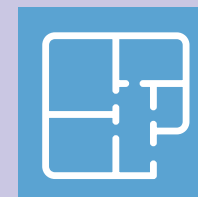
Apartments



Greenspace

Full Building Renovations Completed

Building Highlights



1,184 SF – 19,428 SF



4.0/1,000
Parking Ratio



\$26.50 SF, Full Service
Rental Rate



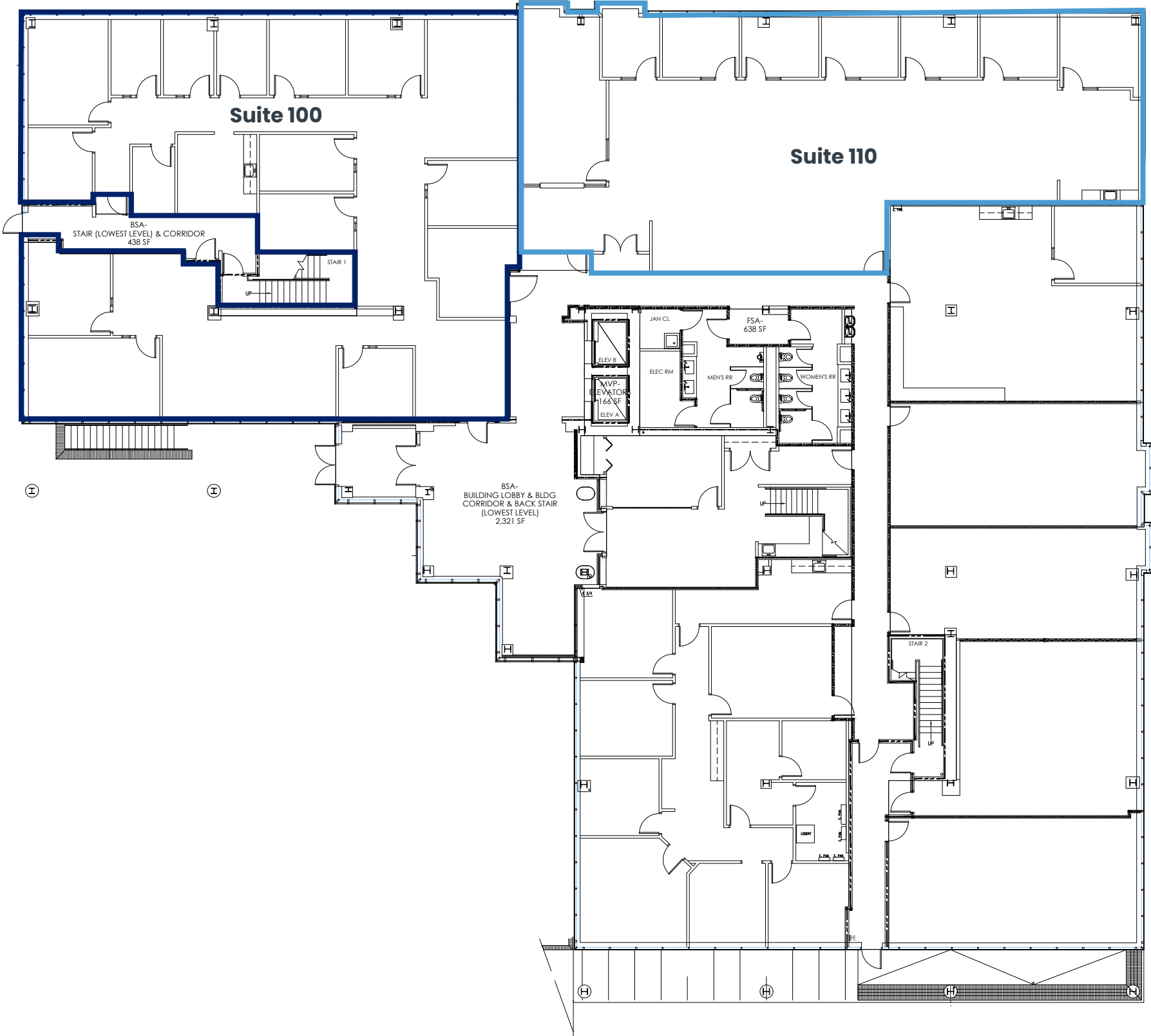
Covered parking



9 minute drive to RDU
International Airport

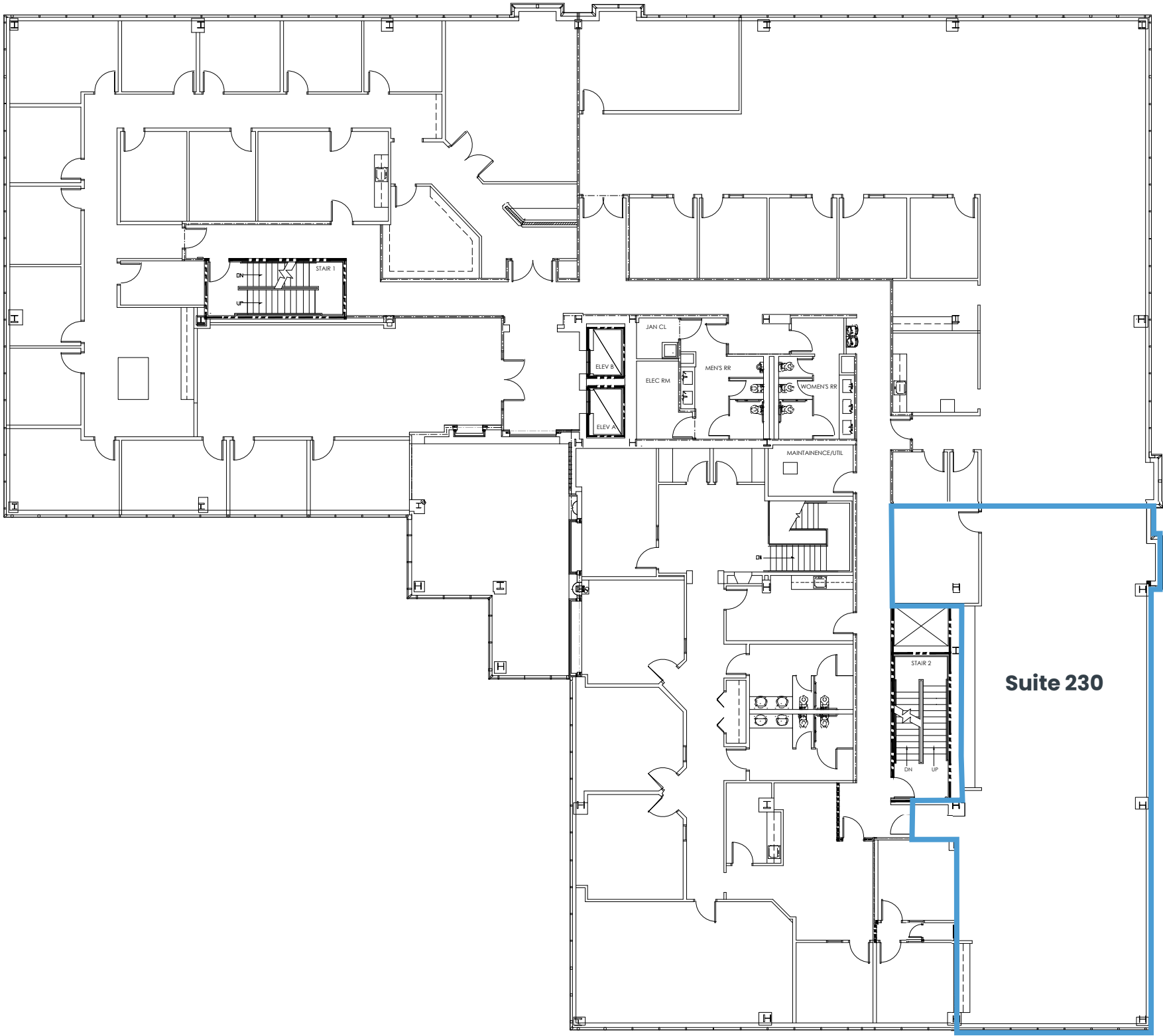
First Floor

Suite 100 – 4,844 SF
Suite 110 – 3,846 SF *spec Suite Under Construction*



Second Floor

Suite 230 – 2,812 SF

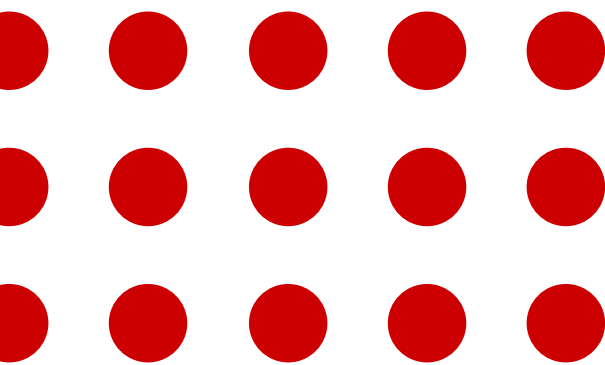
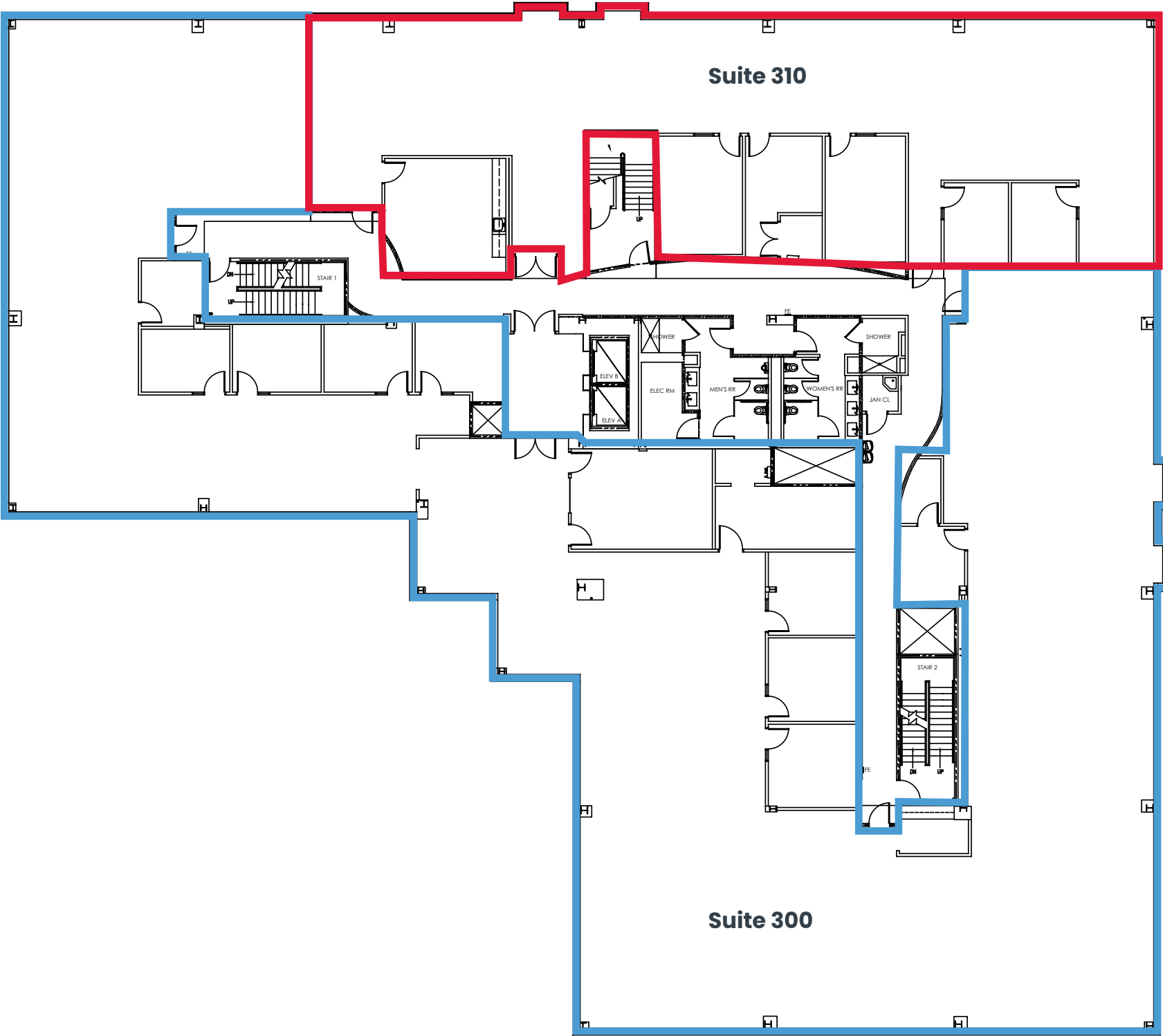


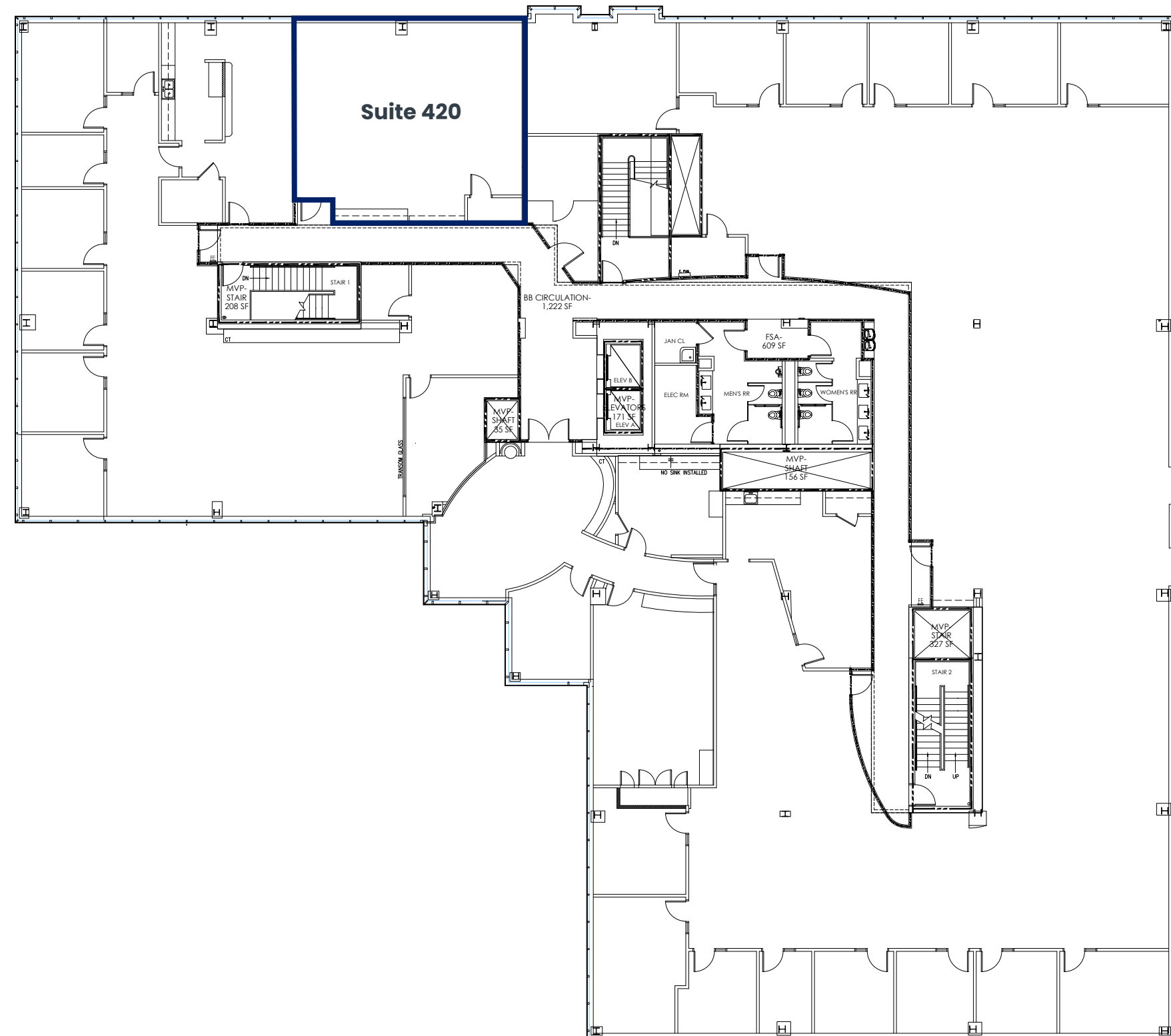
Third Floor

Suite 300 – 13,957 SF

Suite 310 – 5,212 SF

Suites can be combined for a total 19,169 SF





Research Triangle Park

North Carolina



For more information:

hubrtpoffice@am.jll.com